

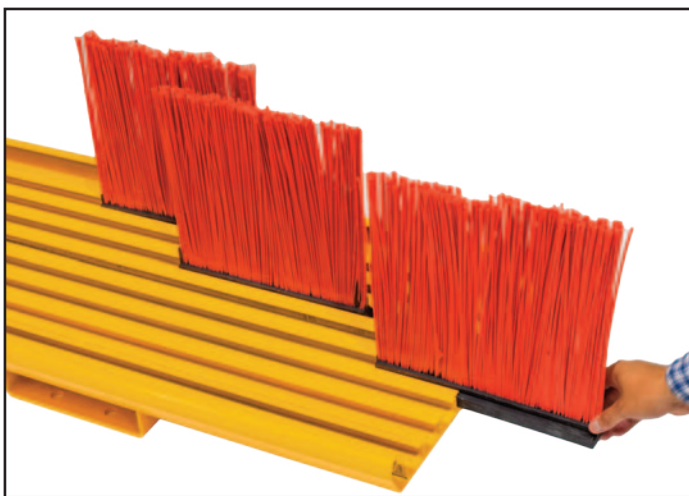
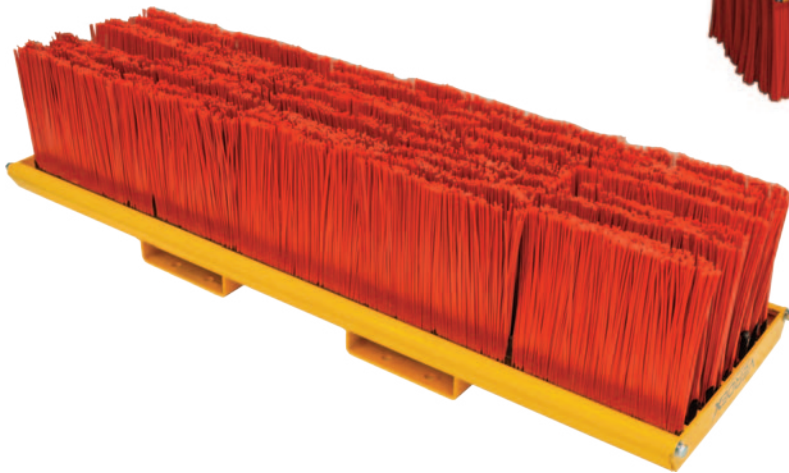
# Waste Handling Bins & Equipment

**VERDEX**  
Incorporates **MHA**



## Forklift Sweeper Attachments

- The fork mounted sweeper is a quick and easy solution for reheapng products such as sand, top soil, grain or similar
- Equiped with ratchet straps to fasten securely on the forklift mast
- HCG: 205mm
- Fork Pocket Size: 218x44mm
- Fork Pocket Centre: 520mm



Bristle Rows: 8  
Bristle Height: 275mm



Code	Details	Overall Size LxWxH (mm)	Unit Weight (kg)
V6035	1500mm Forklift Sweeper	1500x465x326	75
V6036	1800mm Forklift Sweeper	1800x465x326	85





## Wet & Dry Vacuum Cleaners

- Industrial wet and dry vacuum cleaners
- Portable on wheel base with push handle
- Complete with all accessories
- Suitable for large workshops and factories
- Fitted with standard 10Amp 240V plug
- 70L Version supplied with push handle on trolley (V7000)



Code	Details	Motor (W)	Airflow (L/Sec)	Hose Length (mm)	Cable Length (mm)	Height (mm)	Unit Weight (kg)
V3000	30L Wet/Dry Vacuum Cleaner	1200	53	2500	7200	720	11
V7000	70L Wet/Dry Vacuum Cleaner	2000	106	2500	7200	980	24

## Manual Push Floor Sweeping Machine

- Ideal for sweeping factory floors, carpark, footpaths, entry ways etc.
- Independent rolling brushes prevent waste fallback
- Sweeper works by simply being pushed along which activates the roller and brushes
- Waste is picked up by the the roller and brushes and pushed into the waste container located under the main cover
- Waste container is removable allowing for easy tipping into another bin



Watch a video of this in operation on our website here: [www.verdex.com.au/v9000](http://www.verdex.com.au/v9000)



Code	Waste Container Capacity (L)	Cleaning Width (mm)	Overall Size LxWxH (mm)	Unit Weight (kg)
V9000	40	920	1260x960x1040	23

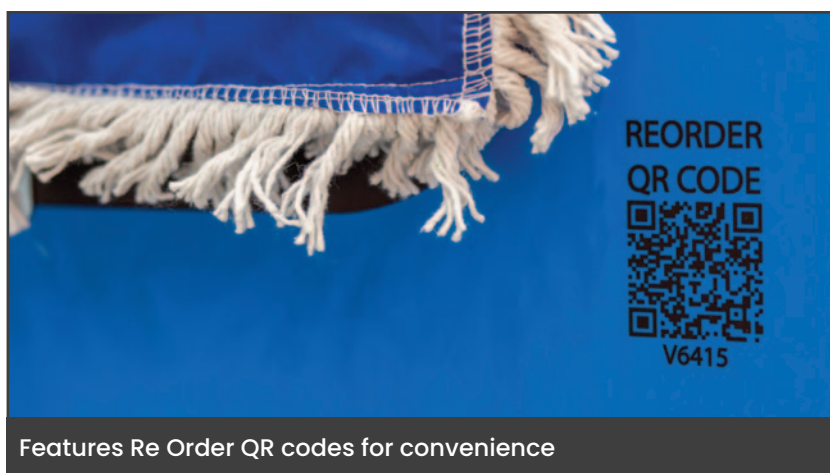


# Cleaning Station Shadow Board Kit

This Shadow Board Kit is typically used in environments where ensuring cleanliness and organization is important. These areas include; food processing facilities, warehouses, manufacturing plants, and other industrial settings.

Improve workplace efficiency by keeping cleaning tools easily accessible with our Shadow Board

- Material : Aluminum UV Printed
- Supplied with 1 x V6403-Dust Mop, 1 x V6401 Industrial Broom with Squeegee, 1 x V6405 Large Dust Pan & Broom set and 1 x V6404 Large Dust Pan with Brush Set  
(See individual products on pages below)



Features Re Order QR codes for convenience



Easily attaches to hooks

Code	Board Dimensions WxH (mm)	Unit Weight(kg)
V6414	1100x2100	18kg



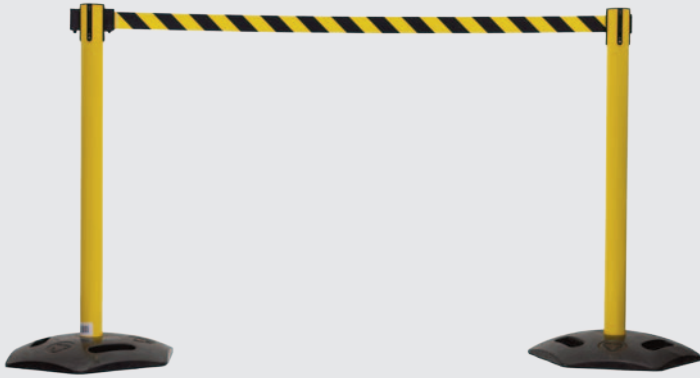
Watch a video of this in operation on our website here: [www.verdex.com.au/V6414](http://www.verdex.com.au/V6414)







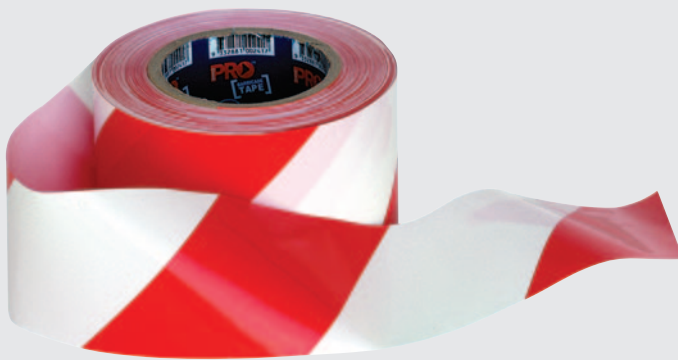
# POPULAR SAFETY PRODUCTS



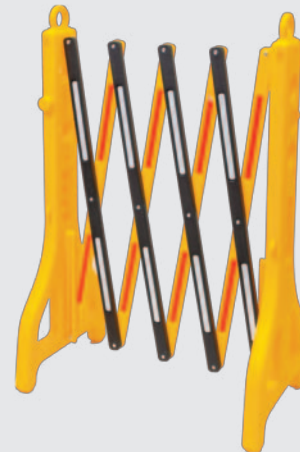
**Barrier Post**  
See Page 290



**Safety Tags**  
See Page 302



**Barricade Tape**  
See Page 297



**Safety Barrier**  
See Page 293



**Floor Marking Stickers**  
See Page 300



**Safety Gate & Sign**  
See Page 291

## Floor Brush with Squeegee

This set is extremely versatile, not only allowing you to sweep your workshop for debris and dust but to also scrub it for liquid spills etc.

- 600mm Floor brush with Squeegee
- Durable 25mm Powder coated Steel Handle
- 60mm long Synthetic Bristle



Code	Overall Size LxWxH (mm)	Unit Weight (kg)
V6401	590x100x1420	1.3

## Large Dustpan and Broom Set

This compact & versatile set can be easily accessible as freestanding or even folded & hung up for easy storage.

- Broom and Dustpan handles are made from Durable Powder Coated steel
- Broom head is constructed from durable polypropylene plastic
- Broom Handle: 20mm
- Dustpan Handle: 25mm
- 140mm long Synthetic Bristle
- Unit Weight: 1.8kg



Closed



Open

Code	Overall Size of Dustpan & Broom (mm)	Dustpan Folded Size (mm)	Dustpan Size in use (mm)	Opening Size (mm)	Broom Size (mm)
V6405	340x280x1350	320x130x1020	320x280x890	300x100	340x50x1215





## Dust Mop with Steel Handle

Our Dust Mop is a great cleaning solution suited for a variety of surfaces. It features a durable design with an aluminium powder coated handle & polyester fibres suitable for industrial applications.

The swivel head promotes easy maneuverability, allowing extra reach for those difficult spots.

- 900mm dust mop
- Durable 25mm Powder coated aluminum Handle
- Swivel head with polyester fibres



Code	Overall Size LxWxH (mm)	Unit Weight (kg)
V6403	900x160x1420	2.3

## Large Dustpan With Brush

The Verdex Large Dustpan with Brush is designed to provide an efficient and effective cleaning solution for a variety of environments, especially those with heavy debris.

- Broom Bristle Material: Polyethylene Terephthalate (PET)
- Dustpan Material: Polypropylene (PP)



Code	Overall Size LxWxH (mm)	Unit Weight (kg)
V6404	405x320x70	0.5

## X Shape Laundry Cart

- Lightweight trolley which is great for carting linen or waste
- Can be folded when not in use
- Strong vinyl bag
- Rubber castors - 4 x swivel
- Castors: 100mm
- Load Capacity: 100kg
- Volume Capacity: 150L

V9061 Replacement Bag



Code	Details	Overall Size LxWxH (mm)	Unit Weight (kg)
V9060	X Shape Laundry Cart	620x620x995	10
V9061	Replacement Bag to suit V9060		

## Plastic X Shape Laundry Cart

- Lightweight trolley which is great for carting linen or waste
- Easily remove the waste bag by unhooking from the frame
- Can be folded when not in use
- Strong vinyl bag
- Rubber castors - 4 x swivel
- Castors: 75mm
- Load Capacity: 60kg
- Volume Capacity: 178L
- Folded Size (LxWxH): 660x440x1100mm

V9071 Replacement Bag



Code	Details	Overall Size LxWxH (mm)	Unit Weight (kg)
V9070	Plastic X Shape Laundry Cart	690x660x950	10
V9071	Replacement Bag to suit V9070		

## 350L Waste Collection Bin

- Great for use in warehouses and on sites, for general waste and rubbish
- 2 front wheels and 1 rear wheel for easy wheeling throughout the workplace
- Pull handle which releases the bin forward



View video of this in operation here: [www.verdex.com.au/V6300](http://www.verdex.com.au/V6300)



Code	Front Wheel Size (mm)	Rear Wheel Size (mm)	Bin Capacity (L)	Safe Working Load (kg)	Bin Dimensions LxWxH (mm)	Unit Weight (kg)
V6300	340	125	350	350	1350x850x1040	72





## Plastic Bin Trolley (Blue)

- Heavy duty rotomoulded bin with 25mm steel tubular frame
- Bin is ribbed for extra strength
- Additional bins are available to purchase
- 280L Internal Top Dimension (WxL): 910x615mm
- 400L Internal Top Dimension (WxL): 1170x650mm
- 280L Height From Ground To Top Rim: 740mm
- 400L Height From Ground To Top Rim: 790mm
- Nylon castors - 2 x fixed, 2 x swivel
- Load Capacity: 400kg



Code	Details	Internal Base Size (mm)	Overall Size LxWxH (mm)	Unit Weight (kg)
V1270B	Blue 280L Capacity Bin Trolley (Includes Bin)	-	1170x730x800	25
V1271	Blue 280L Capacity Tub	500x780	1030x730x600	8.5
V1273B	Blue 400L Capacity Bin Trolley (Includes Bin)	-	1400x710x850	44
V1274	Blue 400L Capacity Tub	1040x540	1280x780x640	12.6

## Plastic Bin Trolley (White)

- Heavy duty rotomoulded bin with 25mm steel tubular frame
- Bin is ribbed for extra strength
- Additional bins are available to purchase
- 280L Internal Top Dimension (WxL): 910x615mm
- 400L Internal Top Dimension (WxL): 1170x650mm
- 280L Height From Ground To Top Rim: 740mm
- 400L Height From Ground To Top Rim: 790mm
- Nylon castors - 2 x fixed, 2 x swivel
- Load Capacity: 400kg



Code	Details	Internal Base Size (mm)	Overall Size LxWxH (mm)	Unit Weight (kg)
V1270W	White 280L Capacity Bin Trolley (Includes Bin)	-	1170x730x800	25
V1272	White 280L Capacity Tub	500x780	1030x730x600	8.5
V1273W	White 400L Capacity Bin Trolley (Includes Bin)	-	1400x710x850	44
V1275	White 400L Capacity Tub	1040x540	1280x780x640	12.6



## Round Plastic Waste Bins (Flat Lid)

- Plastic construction will not rust, chip or peel, resists dents.
- Double-ribbed base which increases stability and dragging capacity
- Reinforced rims add strength and durability
- Strong, snap-on lids allow for secure, stable stacking
- Built-in handles allow easy, non-slip lifting
- Tight-fitting indented lid design helps protect dry goods and other contents, while facilitating stacking during transportation and storage
- Quick and easy twist on, twist off dolly available to suit
- The dolly raises the bin overall height by 130mm
- Lid supplied with bin
- Colour: Grey
- V6310 Overall Height with Dollie: 745mm
- V6311 Overall Height with Dollie: 830mm
- V6312 Overall Height with Dollie: 930mm



V6320



V6321

Bin locks into  
dollie base



V6310



V6311



V6312

Code	Details	Overall Dia. Inc Handle (mm)	Dimensions DxH (mm)	Unit Weight (kg)
V6310	Round Plastic Waste Bin (80L Capacity)	555	505x615	4
V6311	Round Plastic Waste Bin (120L Capacity)	630	575x700	5
V6312	Round Plastic Waste Bin (168L Capacity)	700	620x800	7
V6320	Round Dollie to suit V6310	-	400 (D), 130 (H)	2
V6321	Round Dollie to suit V6311 & V6312	-	450 (D), 130 (H)	3





## Round Plastic Waste Bins (Swing Lid)

- Plastic construction will not rust, chip or peel, resists dents.
- Double-ribbed base which increases stability and dragging capacity
- Reinforced rims add strength and durability
- Strong, snap-on lids allow for secure, stable stacking
- Built-in handles allow easy, non-slip lifting
- Tight-fitting indented lid design helps protect dry goods and other contents, while facilitating stacking during transportation and storage
- Quick and easy twist on, twist off dolly available to suit
- The dolly raises the bin overall height by 130mm
- Lid supplied with bin
- Colour: Grey
- V6315 Overall Height with Dollie: 910mm
- V6316 Overall Height with Dollie: 1020mm



Code	Details	Overall Dia. Inc Handle (mm)	Dimensions DxH (mm)	Unit Weight (kg)
V6315	Round Plastic Waste Bin (80L Capacity)	555	505x780	4
V6316	Round Plastic Waste Bin (120L Capacity)	630	570x890	5
V6320	Round Dollie to suit V6315	-	400 (D), 130 (H)	2
V6321	Round Dollie to suit V6316	-	450 (D), 130 (H)	3

## Wheelie Bin Stands

- This wheelie bin security stands are great for securing your bins in public areas
- The stand is hot dip galvanised which is great for use in coastal areas
- The stands come standard with a lid restrictor and a spring loaded locking mechanism
- Supplied with one security allen key to open the locking mechanism
- Can be secured on the ground using (4) M12 dynabolts



Code	Details	Overall Size LxWxH (mm)	Unit Weight (kg)
V6380	Single Wheelie Bin Stand with Base Plate (120L)	395x250x1030	10.5
V6381	Double Wheelie Bin Stand with Base Plate (120L)	540x250x1030	12.5
V6382	Single Wheelie Bin Stand with Base Plate (240L)	395x250x1155	11
V6383	Double Wheelie Bin Stand with Base Plate (240L)	538x250x1255	13
V6384	Single Wheelie Bin Stand Inground (120L & 240L)	345x75x1425	9.5
V6385	Double Wheelie Bin Stand Inground (120L & 240L)	538x75x1425	11.5



## Foot Pedal Lifting Wheelie Bins

- These wheelie bins come supplied with a foot pedal operated lid which avoids touching the lid when disposing of waste
- Manufactured from high density polyethylene
- Resistant to decay, heat, frost, chemicals and UV rays
- Ideal for food preparation areas
- Available in Blue, Green and Grey
- Wheel Diameter: 200mm



Code	Details	Overall Size WxDxH (mm)	Unit Weight (kg)
V6340	Blue 120L Wheelie Bin (with foot pedal)	500x550x930	9.2
V6341	Green 120L Wheelie Bin (with foot pedal)	500x550x930	9.2
V6345	Blue 240L Wheelie Bin (with foot pedal)	590x740x1070	14.5
V6346	Green 240L Wheelie Bin (with foot pedal)	590x740x1070	14.5
V6347	Grey 240L Wheelie Bin (with foot pedal)	590x740x1070	14.5



## 70L Garbage Bins

- Small waste bins with four swivel castors
- Manufactured from high density polyethylene
- Resistant to decay, heat, frost, chemicals and UV Rays
- Available in four colours: Yellow, Blue, Grey and Green



Code	Details	Castors (mm)	Bin Capacity (L)	Overall Size WxDxH (mm)	Unit Weight (kg)
V6330	70L Garbage Bin (Yellow)	50	70	450x440x680	2.8
V6331	70L Garbage Bin (Blue)	50	70	450x440x680	2.8
V6332	70L Garbage Bin (Grey)	50	70	450x440x680	2.8
V6333	70L Garbage Bin (Green)	50	70	450x440x680	2.8

## Plastic Wheelie Bins

- Wheelie bins available in 2 standard sizes and 5 colours
- Manufactured from high density polyethylene
- Resistant to decay, heat, frost, chemicals and UV rays



Code	Details	Overall Size WxDxH (mm)	Unit Weight (kg)
V6350	Plastic Wheelie Bin (120L)	480x550x940	10
V6360	Plastic Wheelie Bin (240L)	580x730x1080	13

\*Bin colours available to order online



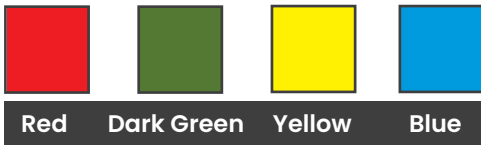
# Large Plastic Wheelie Bins

- Large plastic wheelie bins available in 2 standard sizes
- Choice of various bin and lid colours (green, blue, yellow, red)
- Manufactured from high density polyethylene
- Resistant to decay, heat, frost, chemicals and UV rays
- Wheel Diameter: 200mm
- V6361 Capacity: 660L
- V6362 Capacity: 1100L



V6361B pictured

### Bin Colours available:



Code	Details	Wheel Base Size WxD (mm)	Overall Size WxDxH (mm)	Unit Weight (kg)
V6361	Large Plastic Wheelie Bin – Flat Lid (660L)	490x870	1310x775x1175	42
V6362	Large Plastic Wheelie Bin – Flat Lid (1100L)	750x880	1373x1073x1354	65



## Pull Cord Forklift Wheelie Bin Tippers

- These tippers are available for tipping 240 litre wheelie bins
- Simple and safe tipping operation
  - operated via a pull cord from the drivers seat
- The wheelie bin is firmly secured into position by the frame assembly preventing any bin movement, with the additional securing chain around the front of the bin. Returning the bin to the upright position can be done manually or with the forklift, the bin automatically locking into position once upright.
- 180 degree tipping operation
- Enamel painted finish



Watch a video of this in operation on our website here: [www.verdex.com.au/V6100](http://www.verdex.com.au/V6100)



Code	Bin Capacity (L)	Safe Working Load (kg)	Load Centre (mm)	Fork Pocket Size (mm)	Fork Pocket Centres (mm)	Unit Weight (kg)
V6100	1 x 240	500	1000	192x67	840	80

## Double Wheelie Bin Tipper Forklift Attachment

- Allows 180° rotation of one or two standard 240L plastic wheelie bins, simultaneously
- Ramp fitted for wheeling bins into position
- Safety chain and backrest used to secure bins in cradle
- Simple tipping action operated from forklift driver's seat
- Slip-on attachment allows quick connection to a forklift
- Can be configured to suit 120L plastic wheelie bins
- Suitable for manufacturing and general industry applications
- Zinc finish
- Load Centre: 1200mm



Code	Working Load Limit (mm)	Fork Pocket Size (mm)	Fork Pocket Centres (mm)	Unit Weight (kg)
V6103	1000	185x75	310	150





# Pull Cord Forklift Wheelie Bin Tipper

- This Tipper can empty a 660 litre and/or 1100 litre plastic wheelie bins by forklift, or an overhead crane.
- Allows 160° rotation of 660 or 1100 litre wheelie bins
- Suitable for operation with forklift or overhead cranes
- Pull cord tipping action activated at a safe distance by operator
- Shock absorber controls tipping forces
- Ratchet tensioners for simple and secure fastening of bin to attachment
- Enamel paint finish



Watch a video of this in operation on our website here: [www.verdex.com.au/v6101](http://www.verdex.com.au/v6101)



Code	Load Capacity (kg)	Overall Size WxDxH (mm)	Load Centre (mm)	Fork Pocket Size (mm)	Fork Pocket Centres (mm)	Unit Weight (kg)
V6101	500	1655x1200x1615	850	185x65	800	185



# Battery Electric Wheelie Bin Tipper

The Verdex Battery Electric Bin Tipper (with Remote) is everything a bin tipper should be - safe, economical & easy to use. Ideal for schools, factories, recycling centres and more.

- Rugged powder coated frame
- Wireless Remote Control, allowing user to control from a distance
- Indoor or outdoor use
- Lockout key and two-hand controls for safety
- Approximately 20 seconds to empty a bin
- Capable of tipping 2.5 tonnes of waste per charge
- If left plugged in on permanent charge, it can empty up to 10 tonnes per day
- Suits popular bin sizes 80L, 120L, 140L and 240L, with no adjustment
- Castors: 125mm, 2 with brakes
- Overall Height When Tipping: 2660mm



Wireless Remote - can be operated from a distance



View video of this in operation here [www.verdex.com.au/V6080](http://www.verdex.com.au/V6080)



Code	Lifting Capacity (kg)	Mast Height (mm)	Overall Size WxD (mm)	Tipping Height (mm)	Unit Weight (kg)
V6080	150	2485	1019x930	1600	137



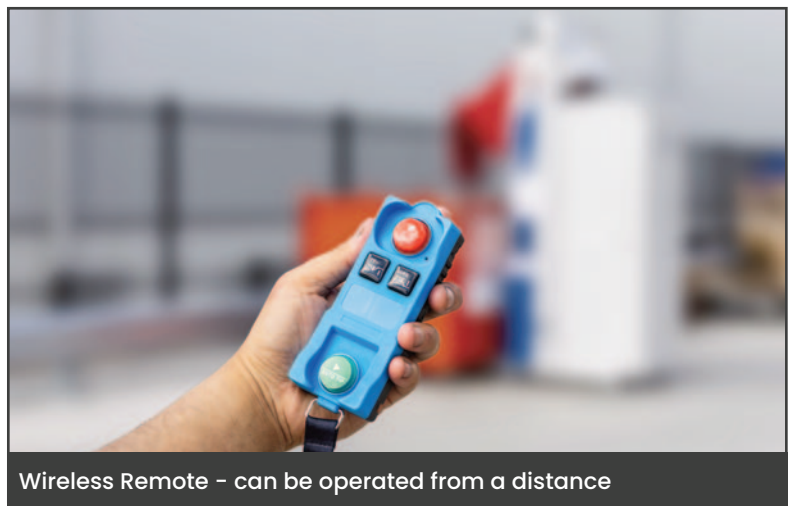


# Battery Electric Wheelie Bin Tipper (Fully Enclosed)

The robust, fully enclosed Verdex bin tipper is the safest & most innovative unit of its kind. It comes standard with an 1800mm tipping height which is suitable for almost every environment & application. The unit is super efficient & incorporates an Auto Tip feature & can also be operated from a distance via a remote control hand piece.

For added safety it is fitted with interlocking doors to remove the risk of anything obstructing the cradle while in use. The Verdex Bin Tipper has a capacity of 250kg & the standard multi-purpose cradle is designed to accommodate 80, 120 & 240 litre bins.

- Achieves CAT 1 Safety Rating
- Power Supply: Battery with 240v built in charger
- 4 x 125mm swivel castors, 2 with brakes



Wireless Remote - can be operated from a distance



View video of this in operation here [www.verdex.com.au/V6082](http://www.verdex.com.au/V6082)



Code	Lifting Capacity (kg)	Tipping Height (mm)	Overall Size LxWxH (mm)	Unit Weight(kg)
V6082	250	1800	1170x1025x2865	276



# Manual Wheelie Bin Tipper

The Verdex Manual Wheelie Bin Tipper is a robust and efficient solution for managing waste disposal. Designed for easy use, operators can effortlessly tip and empty wheelie bins without much effort. Ideal for both residential and commercial settings.

- Lifts 80L, 120L, 140L and 240L bins
- Heavy duty winch operated - no motorised pinch points!
- No electrical or hydraulic components to service
- Rugged powder coated frame for weather protection
- Overall Height: 2485mm



Code	Lifting Capacity (kg)	Mast Height (mm)	Overall Size WxD (mm)	Tipping Height (mm)	Unit Weight (kg)
V6083	65	2485	980x930	1600	136



# 660L Wheelie Bin with Rotator Base

- 60 litre wheelie bin suits high volume waste & recycling
- Fitted with rotator base allowing rotation by a forklift
- 4 swivel wheels, 2 fitted with brakes for manoeuvrability
- 2 large handles on each side
- Strong and sturdy design
- Smooth inner walls for ease in emptying & cleaning
- Resistant to acid, alkali, corrosion & durable to endure impact



Fork pockets for forklift attachment



View video of this in operation here [www.verdex.com.au/V6365](http://www.verdex.com.au/V6365)



Code	Capacity (L)	Dimensions LxWxH (mm)	Fork Pocket Size (mm)	Fork Pocket Centres (mm)	Unit Weight (kg)
V6365	660	1370x780x1240	160x60	365	72



## Forklift Crane Bins - 2T

- Heavy duty crane bins for all waste products
- These crane bins are space saving as they allow the bins to nest inside each other for transport and storage
- 2 tonne capacities
- Optional wheels available
- Crane hooks as standard
- Finish: Zinc plated
- Fork Pocket Size: 160x95mm (length), 160x75mm (width)



V1283 Wheel Kit to suit



Crane Hooks



V6046

V6047

V6045

Code	Details	Fork Pocket Centres (mm)	Overall Size WxLxH (mm)	Unit Weight (kg)
V6045	2 Tonne Fork/Crane Bin (850L)	450	1156x1156x1100	162
V6046	2 Tonne Fork/Crane Bin (1300L)	450	1716x1156x1100	240
V6047	2 Tonne Fork/Crane Bin (2500L)	790	2316x1516x1100	335
V1283	Wheel Kit to suit Crane Bins			

## Concrete Washout Bins

- Heavy-duty design with a waste pipe and air vent prevents blowout injuries & contains cement waste.
- Suitable for use with boom and line concrete pumps
- Can safely be used with compressed air & water line cleans
- Easily removable exhaust air vent for sponge recovery
- Lid secured to bin by safety chains in 4 points
- Bin Working Load Limit: 2000kg



Code	Details	Overall Size LxWxH (mm)	Unit Weight (kg)
V6053	Concrete Washout Bin (850L)	1290x1180x1350	242
V6054	Concrete Washout Bin (1350L)	1830x1185x1285	380
V6055	Concrete Washout Bin (2500L)	2330x1545x1320	600
V6057	Disposable Plastic Liner to suit 1350L Bin		
V6058	Disposable Plastic Liner to suit 2500L Bin		





## Forklift Tipping Bin – 150L

- This light weight fork waste bin is great for use in warehouses and on sites for general waste and rubbish
- Fitted standard with 2 front wheels and 1 rear wheel for easy wheeling throughout workplace
- Simply pull the cord or handle which releases mechanism for tipping into larger bins or skips
- Painted finish
- Polyurethane castors – 2 x fixed, 1 swivel with brake



Code	Castors (mm)	Load Capacity (kg)	Bin Capacity (L)	Fork Pocket Size (mm)	Fork Pocket Centres (mm)	Height to Top of Lip (mm)	Overall Size LxWxH (mm)	Unit Weight (kg)
V6000	125	500	150	140x55	600	710	1160x750x805	95

## Forklift Tipping Bins – 150L, 300L

- Great for use in warehouses & building sites for general waste & rubbish
- Available in painted yellow or galvanised
- Pull cord to release the mechanism for tipping into larger waste bins which saves the operator having to leave the forklift
- Safe Working Load: 350kg
- 150L & 300L Capacities available
- Fork Pocket Size: 140x65mm



View video of this in operation here:  
[www.verdex.com.au/v6070](http://www.verdex.com.au/v6070)



Code	Details	HCG (mm)	Fork Pocket Centres (mm)	Overall Size LxWxH (mm)	Unit Weight (kg)
V6070	150L Waste Tipping Bin (Yellow Painted)	402	600	970x750x820	90
V6071	300L Waste Tipping Bin (Yellow Painted)	451	800	1065x950x960	116
V6075	150L Waste Tipping Bin (Galvanized)	402	600	970x750x820	90
V6076	300L Waste Tipping Bin (Galvanized)	451	800	1065x950x960	116



## Forklift Rollover Tipping Bin – 1100L (with Release Mechanism)

- The Forklift rollover tipping bin with a release mechanism attaches to forklifts and is used to safely transport and unload bulk materials.
- It's commonly used in waste management, recycling, construction, and manufacturing for handling materials like scrap, debris, or loose loads.
- The release mechanism allows for controlled tipping, improving efficiency and safety by reducing manual handling.
- Finish: Hot Dipped Galvanised



Code	Capacity (L)	Working Load Limit (mm)	Overall Size LxWxH (mm)	Unit Weight (kg)
V6115	1100	1200	1665x1220x1040	180

## Forklift Tipping Bins – 350L, 460L

- This light weight fork waste bin is great for use in warehouses and on sites for general waste
- Fitted standard with 2 front wheels and 1 rear wheel for easy wheeling throughout workplace
- Manual push over for tipping into larger bins or skips
- Drain plug fitted as standard
- Hot Dipped Galvanised



Watch a video of this in operation on our website here: [www.verdex.com.au/V6005](http://www.verdex.com.au/V6005)



Code	Details	SWL (kg)	Fork Pocket Size (mm)	Fork Pocket Centres (mm)	Overall Size WxDxH (mm)	Unit Weight (kg)
V6005	Fork Waste Bin (350L Capacity)	350	140x65	367	720x1115x890	65
V6006	Fork Waste Bin (460L Capacity)	650	140x65	367	1000x1115x890	90



# Forklift Tipping Bin - 1100L (with Release Mechanism)

- These heavy duty tipping bins are ideal for heavy waste including metal, timber and building site rubble
- The tipping release mechanism is activated by the forklift operator pulling the pull cord from the drivers seat - the custom built shock absorber prevents impact forces being transmitted to the forklift when emptying
- Fitted with a Drain Plug
- Finish: Galvanised



V6013 Wheel Kit



Watch a video of this in operation on our website here, [www.verdex.com.au/V6023](http://www.verdex.com.au/V6023)



Code	Details	Bin Capacity (L)	Safe Working Load (kg)	Overall Size LxWxH (mm)	Fork Pocket Size (mm)	Fork Pocket Centres (mm)	Unit Weight (kg)
V6023	1100L Tipping Bin	1100	1000	1625x1140x1005	170x70	635	210
V6013	Wheel Kit to suit 1100L Tipping Bin						

# Forklift Bin Compactor - 1T

- Used to compact bulky waste products using a forklift
- Suitable for use with a 660L wheelie bin or any larger bins
- Eliminates the unsafe practice of treading down loose waste
- Slip-on attachment and safety chain for quick connection to forklift
- Increased bin capacity helps lower waste removal costs
- Finish: Hot Dipped Galvanised



Fork Pockets



Safety Chain



Watch a video of this in operation on our website here: [www.verdex.com.au/V6105](http://www.verdex.com.au/V6105)



Code	Load Centre (mm)	Height (mm)	Counterweight Dimensions WxD (mm)	Fork Pocket Size (mm)	Fork Pocket Centres (mm)	Unit Weight (kg)
V6105	830	1300	900x500	185x65	650	1000





## Forklift Tipping Bins – 950L, 1250L, 1850L

- These large self dumping tipping bins are suitable for any waste and rubbish application
- Heavy duty construction with self dumping ability, the forklift empties the bin without the operator leaving the drivers seat
- Supplied with 4 crane lugs (top) and 2 upending lugs (underneath)
- Available in 3 standard sizes
- Optional wheel kit available
- Hot Dipped Galvanised



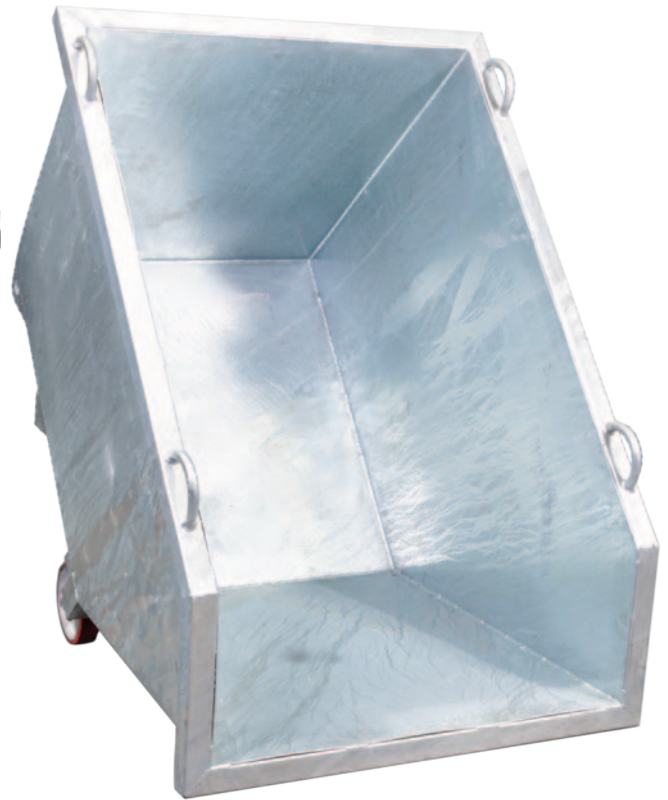
Optional Wheel Kit Available



Crane Lifting Lugs



Crane Lifting Lugs



Watch a video of this in operation on our website here: [www.verdex.com.au/V6010](http://www.verdex.com.au/V6010)



Code	Details	SWL (kg)	Fork Pocket Size (mm)	Fork Pocket Centres (mm)	Overall Size WxLxH (mm)	Unit Weight (kg)
V6010	Self Dumping Tipping Bin (950L)	1500	185x75	380	1570x1010x1080	164
V6011	Self Dumping Tipping Bin (1250L)	1500	185x75	680	1570x1305x1080	188
V6012	Self Dumping Tipping Bin (1850L)	1500	185x75	680	1570x1905x1080	255
V6013	Wheel Kit to suit Tipping Bins (includes 4 wheels)					





## Craneable Storage Bin

These Storage Bins are available in two sizes and have been designed for the secure handling of parts in and around your workshop and during transport.

- Durable Zinc Plated finish
- Easily transported by forklift or crane and are stackable up to 4 high when fully loaded.
- Stackable 4 high when fully loaded.
- Features Crane Lifting lugs fitted as standard
- Optional, lockable lid available for securing on-site tools or smaller equipment



V7568



V7568 pictured with Lid

Code	Details	Working Load Limit (kg)	Overall Size LxWxH (mm)	Unit Weight (kg)
V7568	Craneable Storage Bin (580L)	1000	1150x1150x776	115
V7569	Optional Lockable Lid to suit	-	1020x1020x130	27





## 500L Drop Bottom Bin (Solid Sides)

The heavy-duty Drop Bottom Bin is designed for the efficient storage and transfer of waste materials. This bin is emptied via a simple drop bottom base, allowing complete emptying of contents into a larger bin or dump truck. The base is closed by an automatic locking mechanism when bin is lowered to the ground.

- Drop bottom base allows fast and complete dumping of solid waste
- Heavy-duty 3mm reinforced plate to handle all waste products
- Easily transported by forklift or overhead crane
- Drop bottom base is released safely from driver's seat via a pull cord mechanism
- Powerful shock absorbing system removes all impact from the forklift or crane during emptying
- Crane lugs fitted as standard
- Optional wheel kit available for supply
- Enamel paint finish

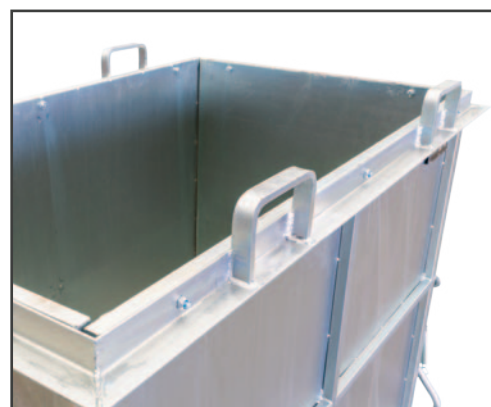


Code	Volume (L)	Safe Working Load (kg)	Bin Dimensions LxWxH (mm)	Fork Pocket Size (mm)	Fork Pocket Centres (mm)	Unit Weight(kg)
V6042	500	1000	1200x1025x745	165x65	684	200



## 1500L Drop Bottom Bin (Solid Sides)

- These drop bottom bins are a heavy duty bin made for all types of waste
- This bin is able to be transported either by forklifts or cranes
- Emptying is carried out by pulling the draw rope handle which allows the floor to drop open from one side allowing complete emptying
- Sheet metal sides and base
- Durable Zinc finish



View video of this in operation here:  
[www.verdex.com.au/v6040](http://www.verdex.com.au/v6040)



Code	Volume (L)	Safe Working Load (kg)	Bin Dimensions LxWxH (mm)	Fork Pocket Size (mm)	Fork Pocket Centres (mm)	Unit Weight (kg)
V6040	1500	1000	1540x950x1350	165x50	784	200





# 1500L Drop Bottom Bin (Mesh Sides)

- These drop bottom bins are a heavy duty bin made for all types of waste
- Ideally suited to the recycling industry, the cage can be lifted by either a forklift or crane
- This bin is able to be transported either by fork lifts or cranes
- Emptying is carried out by pulling the draw rope handle which allows the floor to drop open from one side allowing complete emptying
- Mesh sides with sheet metal base



View video of this in operation here: [www.verdex.com.au/v6041](http://www.verdex.com.au/v6041)



Code	Volume (L)	Safe Working Load (kg)	Bin Dimensions LxWxH (mm)	Fork Pocket Size (mm)	Fork Pocket Centres (mm)	Unit Weight(kg)
V6041	1500	1000	1540x950x1350	165x50	784	158

